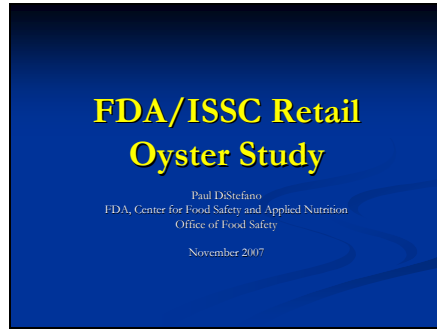


Slide 1

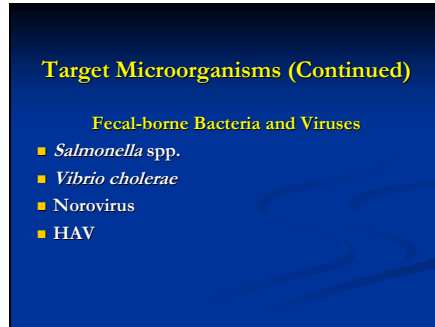


Slide 2



FDA in conjunction with ISSC, NMFS, and states is planning to begin an extensive year long retail study to look at the microbiological quality of shellstock from retail markets in nine states which are geographically representative of the entire country. Data generated will be used to further support and fill some of the data gaps of the Vp and Vv Risk Assessments. It will also examine the occurrence of pollution-associated pathogens in shellfish produced under NSSP. While it is firmly recognized that the NSSP, using its water quality based approach, produces safe shellfish, there is limited data on the occurrence of pollution associated pathogens in shellfish produced under the NSSP. Finally, because we have a limited ability to directly compare the quality of NSSP shellfish with shellfish from other safety programs such as that of the European Union (who bases its program on meat quality rather than water quality), we will be able to better compare the safety of the NSSP against others.

Slide 6



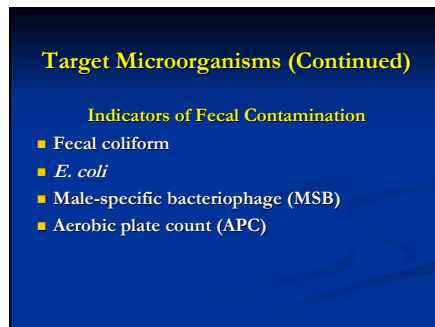
Target Microorganisms (Continued)

Fecal-borne Bacteria and Viruses

- *Salmonella* spp.
- *Vibrio cholerae*
- Norovirus
- HAV

Pollutions associated pathogens to be examined include each of the six organisms shown.

Slide 7



Target Microorganisms (Continued)

Indicators of Fecal Contamination

- Fecal coliform
- *E. coli*
- Male-specific bacteriophage (MSB)
- Aerobic plate count (APC)

Pollution associated indicator organisms to be examined for include Fecal coliforms, *E. coli*, aerobic plate count, and Male specific bacteriophage. There is particular excitement about efforts to examine for male specific bacteriophage. Efforts in the United Kingdom have shown bacteriophage as a good measure of product safety in shellfish meats following depuration, a process required of most shellfish grown in the EU. As many of you know FDA submitted a Proposal to the 2005 ISSC for use of male specific bacteriophage as a tool in determining when areas impacted by sewage spills can be reopened to harvest. That Proposal has been referred to committee.

Slide 8

STUDY RESULTS

Results from the first six months of the study were presented to 2007 SST participants. However, because those results are preliminary, they cannot be presented here. Comprehensive study results will be available in 2008 upon completion of sample collection/analysis and data compilation/interpretation.